

*Seaside -Tropical Designs*

# Woodstock Series



*Shown in Merlot Finish*  
Other Finishes and Hardware Available

NEW ENGLAND WOODCRAFT, INC., FOREST DALE, VERMONT 05745 802-247-8211

[www.NewEnglandWoodcraft.com](http://www.NewEnglandWoodcraft.com)

Email: [Sales@NewEnglandWoodcraft.com](mailto:Sales@NewEnglandWoodcraft.com)

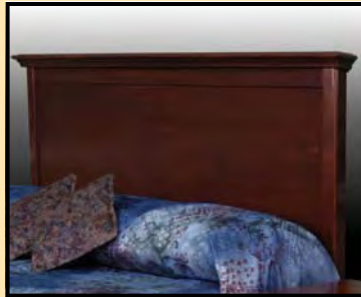
 **NEW ENGLAND  
WOODCRAFT**  
INCORPORATED

Seaside -Tropical Designs

# Woodstock Series



**#8303-DVD Birch Chest**  
Three (3) Drawers  
36"W x 24"D x 36"H



**#8317 Birch**  
Queen Headboard  
Wall Mounted  
68"W x 3"D x 30"H  
**8318 Birch**  
King Headboard  
Wall Mounted  
86"W x 3"D x 30"H



**#8310 Birch Nightstand**  
One (1) Drawer  
22.5"W x 19"D x 24.5"H



**#8323 Optional TV Backboard**  
Wall Mounted or Chest Attachment  
37"W x 2.5"D x 29"H  
Shown on #8303-DVD Chest  
37"W x 24"D x 65"H



**#83130-2226 Birch End**  
Table  
22"W x 26"D x 26"H



**#830678 Birch Chair**  
18"W x 19"D x 36"H



**#83130-2040 Birch Coffee**  
Table  
40"W x 20"D x 18"H



**#83133 Birch Desk**  
One (1) Drawer  
42"W x 24"D x 30"H

*Seaside -Tropical Designs*

# Woodstock Series



*Shown in a White Wash Finish*

Other Finishes and Hardware Available

NEW ENGLAND WOODCRAFT, INC., FOREST DALE, VERMONT 05745 802-247-8211

[www.NewEnglandWoodcraft.com](http://www.NewEnglandWoodcraft.com)

Email: [Sales@NewEnglandWoodcraft.com](mailto:Sales@NewEnglandWoodcraft.com)

 **NEW ENGLAND  
WOODCRAFT**  
INCORPORATED

# Woodstock Series



**#8303-DVD Oak Chest**  
Three (3) Drawers  
36"W x 24"D x 36"H



**#8317 Oak Queen Headboard**  
Wall Mounted  
68"W x 3"D x 30"H  
**#8318 Oak King Headboard**  
Wall Mounted  
86"W x 3"D x 30"H



**#8310 Oak Nightstand**  
One (1) Drawer  
22.5"W x 19"D x 24.5"H



**#8323 Optional TV Backboard**  
Wall Mounted or Chest Attachment  
37"W x 2.5"D x 29"H  
Shown on #8303-DVD Chest  
with Merlot Finish  
37"W x 24"D x 65"H



**#83130-2226 Oak End Table**  
22"W x 26"D x 26"H  
Shown in Merlot Finish



**#831977 Birch Chair**  
18"W x 19"D x 36"H



**#83130-2040 Oak Coffee Table**  
40"W x 20"D x 18"H  
Shown in Merlot Finish



**#83133 Oak Desk**  
One (1) Drawer  
42"W x 24"D x 30"H

# Seaside -Tropical Designs

## Color Scheme I

Bed Scarf & Cornice Fabric



Drapery



Upholstered Options



Bed Skirt

Carpet



The digital photos only provide a basic representation of the patterns  
And colors available for each scheme. Actual carpet and fabric samples  
are available upon request.

NEW ENGLAND WOODCRAFT, INC., FOREST DALE, VERMONT 05745 802-247-8211

[www.NewEnglandWoodcraft.com](http://www.NewEnglandWoodcraft.com)

Email: [Sales@NewEnglandWoodcraft.com](mailto:Sales@NewEnglandWoodcraft.com)

 **NEW ENGLAND  
WOODCRAFT**  
INCORPORATED

# Seaside -Tropical Designs

## Lamp and Wall Art Options I



#5558FHD Floor Lamp



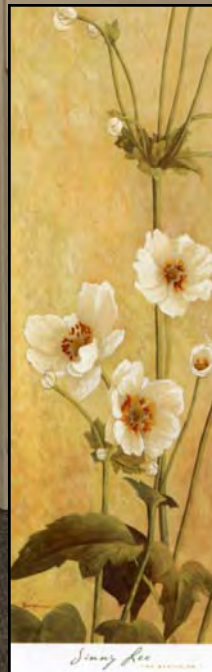
#5558THD Table Lamp



Duncan -Paradise Island II



Duncan -Paradise Island I



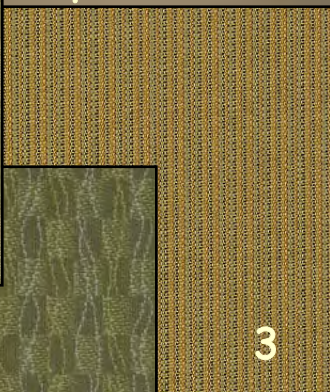
Lee—The Beginning I and II

# Seaside -Tropical Designs

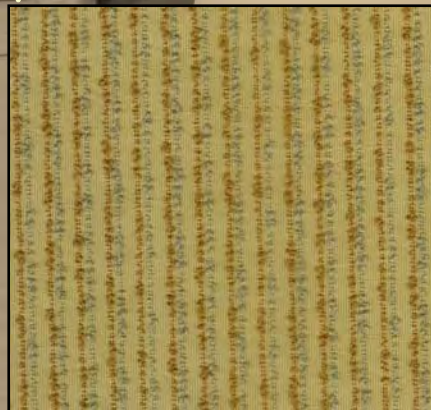
## Color Scheme II



Upholstered



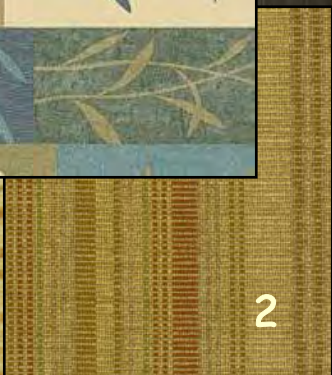
Upholstered Alternative



Bed Scarf & Cornice Fabric



Drapery Options



Bed Skirt Options



Carpet

The digital photos only provide a basic representation of the patterns  
And colors available for each scheme. Actual carpet and fabric samples  
are available upon request.

*Seaside -Tropical Designs*

Lamp and Wall Art Options II



#5558FHD Floor Lamp

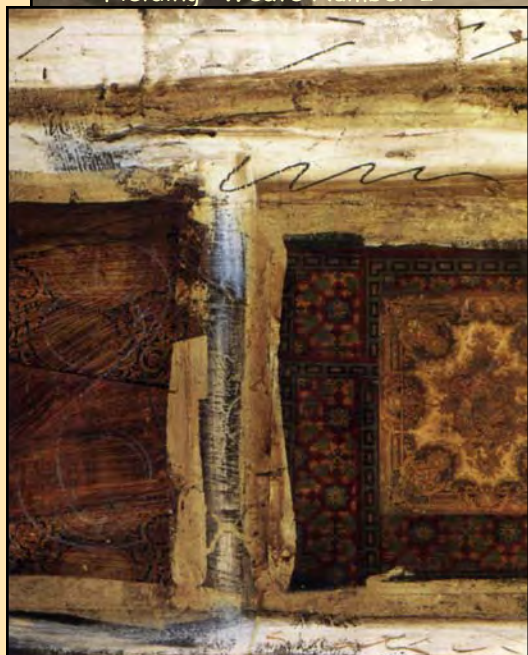


#5558THD Table Lamp



T. S. FIELDING-EDITIONS LIMITED

Fielding -Weave Number 1



T. S. FIELDING-EDITIONS LIMITED

Fielding -Weave Number 2



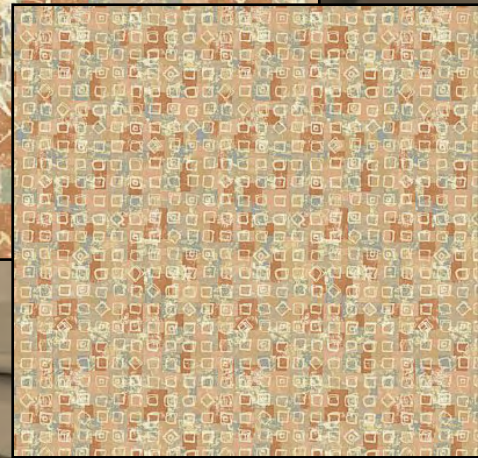
Di Grazzia -Maui Palm I and II

Alternate Color Scheme

Bed Scarf & Cornice Fabric

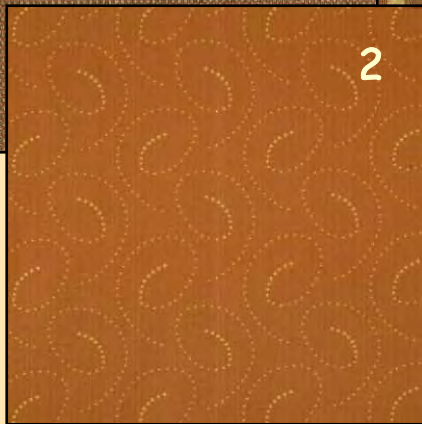
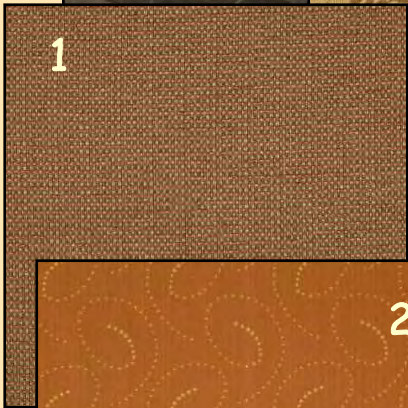


Drapery



Bed Skirt

Upholstered Options



Carpet

The digital photos only provide a basic representation of the patterns  
And colors available for each scheme. Actual carpet and fabric samples  
are available upon request.

# Seaside -Tropical Designs

## Alternate Lamp and Wall Art Options



#5558FHD Floor Lamp



#5558THD Table Lamp



Judeen -Palm Study I



Judeen -Palm Study II



Bullaudy - Havana Palm I



Bullaudy  
Havana Palm II



Harris-Palm Icon I

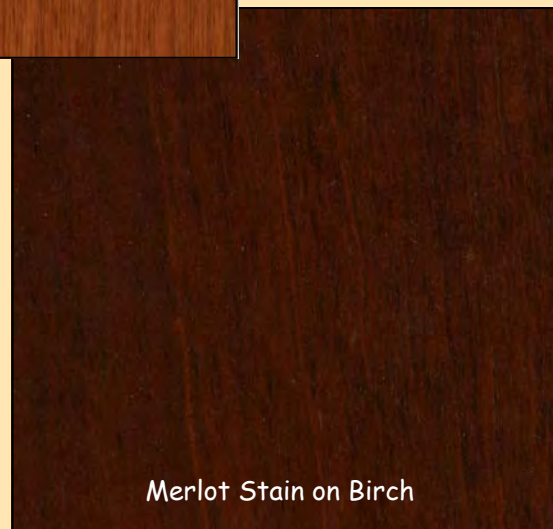
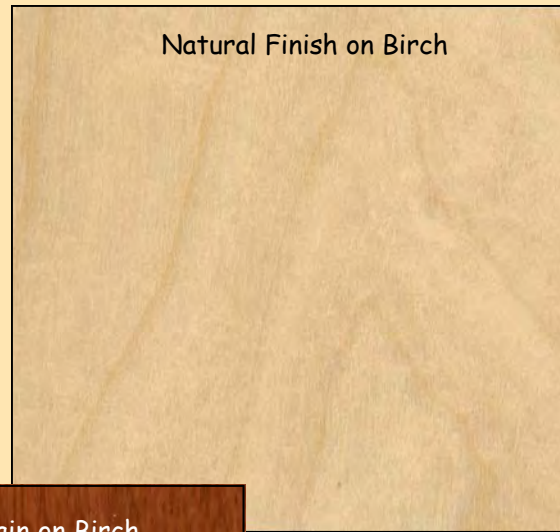


Harris-Palm Icon II



*Seaside -Tropical Designs*

## Finish Samples



**The digital photos only provide a basic representation of the stain color.  
Actual stain samples are available upon request.**